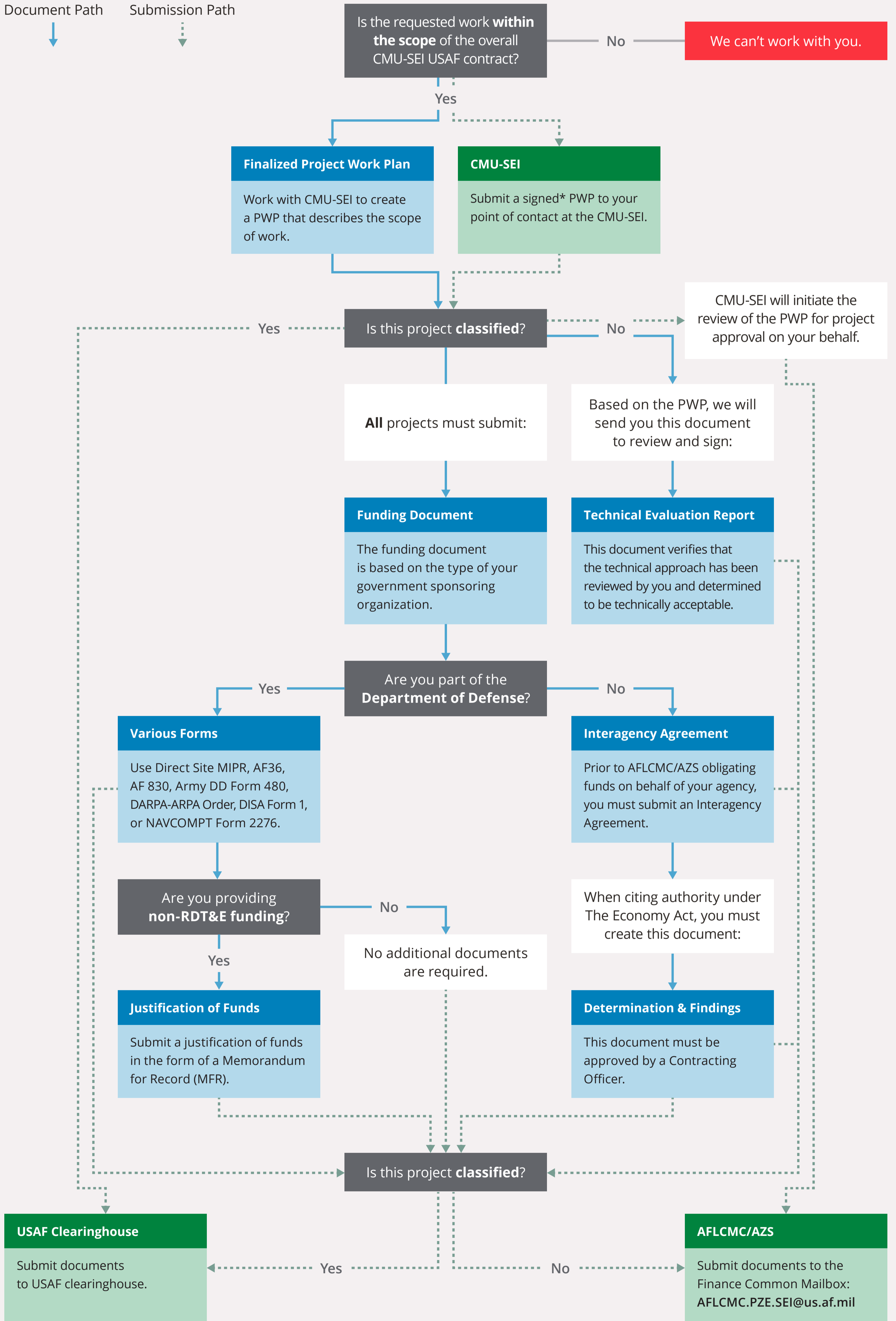


# What Documents Do I Need to Submit and to Whom?

This flowchart details the process that applies to projects funded by the U.S. Government only.

This guide is intended to aide the SEI and the work sponsor to address additional review requirements or actions that may be triggered when the PWP include activities or actions that require specific measures in order to be in compliance with the law, FAR clauses, DoD Regulations or instructions.



\*Initial drafts of PWPs will bear a "DRAFT" watermark and should not be staffed for signature. CMU-SEI will provide you with a "finalized" copy that is ready for signature. CMU-SEI must be notified of any modifications to PWPs after they have been "finalized."