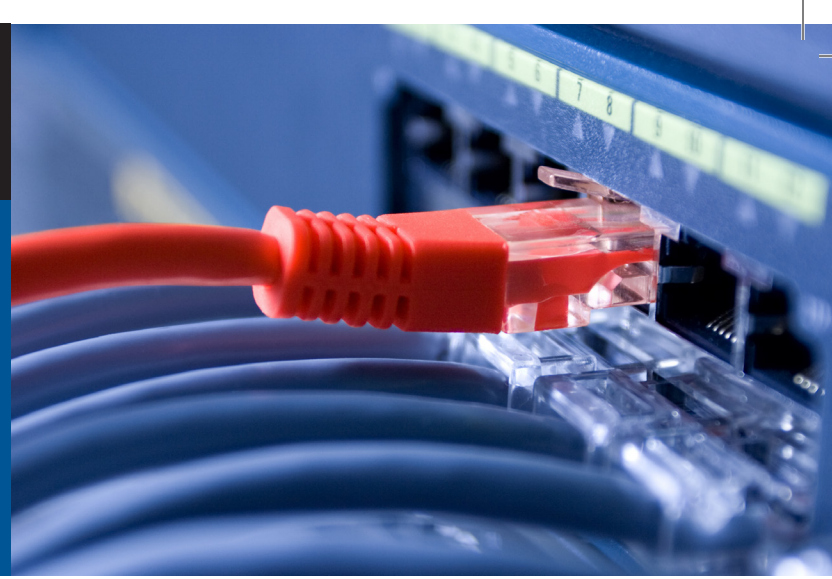




Software Engineering Institute
Carnegie Mellon University

Join Our Cybersecurity Team

CERT is hiring!



Your top-notch skills and knowledge can help us make a difference in our nation's cybersecurity. Join the CERT Division of Carnegie Mellon's Software Engineering Institute (SEI), where you can impact internet security and work alongside world-recognized leaders in cybersecurity.

CERT

At CERT, we study and solve problems with widespread cybersecurity implications, research security vulnerabilities in software products, contribute to long-term changes in networked systems, and develop cutting-edge information and training to help improve cybersecurity.

CERT is more than a research organization. Working with software vendors, we help resolve software vulnerabilities. We develop tools, products, and methods to help organizations conduct forensic examinations, analyze vulnerabilities, and monitor large-scale networks. We help organizations determine how effective their security-related practices are. And we share our work at conferences; in blogs, webinars, and podcasts; and through our many articles, technical reports, and white papers.

CERT collaborates with high-level government organizations, such as the U.S. Department of Defense and the Department of Homeland Security; law enforcement, including the FBI; the intelligence community; and many industry organizations.

The Software Engineering Institute

The SEI is a research organization on the cutting edge of cybersecurity. Using proven software engineering principles and practices, we serve as a national resource in software engineering, computer security, and process improvement.

Our collaborative work environment enables our staff to participate in cross-functional teams in the CERT Division, the SEI, other Carnegie Mellon departments, and across the global community. We also recognize the value of professional growth and take advantage of opportunities to increase subject matter knowledge and leadership capabilities.

Working at Carnegie Mellon University

Working at the SEI means that you also work for Carnegie Mellon, a global research university with more than 13,200 students, 100,000 alumni, and 5,000 faculty and staff. It has campuses in Pittsburgh, Qatar, and Silicon Valley, and degree-granting programs worldwide.

Carnegie Mellon's award-winning faculty members are renowned for solving major scientific, technological, and societal challenges. It fosters a diverse workforce and emphasizes the power of creativity and innovation—our community bridges the art and engineering worlds, is a world leader in robotics, and is home to one of the world's best schools of drama. Current and former faculty and alumni are winning top awards in art, science, and technology. If that wasn't enough, 100% of the university's electricity comes from green power sources, ranking it as a green power leader by the EPA.

Excellent Employee Benefits

The university offers competitive employee benefits, including

- Carnegie Mellon tuition benefit programs for you and your dependent children
- Health benefits (a wide selection of medical insurance plans from several different providers, drug prescription plans, flexible spending accounts, multiple vision and dental plans)
- Competitive (8%) salary contributions to 403(b) retirement accounts
- Relocation assistance
- Lifestyle support (university-run child care, free public transportation, paid time off, etc.)

Pittsburgh

Our main office is located in Pittsburgh, Pennsylvania. Pittsburgh's 1,600 technology firms include Google, Apple, Bosch, Disney, Uber, Intel, and IBM. It is a leader in cyber defense, software engineering, robotics, and energy research and is home to numerous colleges and universities.

Pittsburgh is the third safest city in the U.S., the sixth-best area for U.S. job growth, and is ranked consistently high in lists of the nation's most livable cities. Pittsburgh's low cost of living ranks it number one in affordability in U.S. cities. Its many city parks, extensive hiking and biking trails, museums and libraries, and sports teams (Steelers, Penguins, Pirates, and college teams) will keep you entertained.

Arlington

Our other large office is in the Washington, D.C. area. As our nation's capital, Washington is rich in culture and offers attractions such as the National Mall, National Archives, the Library of Congress, the Smithsonian Institution, the National Gallery of Art, and many well-known memorials such as the Washington Monument and historical buildings such as Mount Vernon.

Washington is the seventh largest metropolitan area in the U.S. with the country's second busiest rapid transit system. Four professional sports teams—the Redskins, Capitals, Wizards, and Nationals—call Washington home. It has a rich theater life and its restaurants, breweries, pubs, wineries, and wine bars appeal to its foodie population.

We Are Hiring for

We are currently searching for experienced applicants for the following positions:

- Software Architect
- Computer Security Information Analyst
- Cybersecurity Researcher
- Cybersecurity Engineer
- Machine Learning Research Scientist
- Network Security Engineers
- Cybersecurity Community Developer
- Vulnerability Analysis
- Penetration Testers

Apply Today!

To apply, you must have a degree (master's degree or doctorate preferred) in computer science, electrical engineering, mathematics, or a related discipline, and you must be eligible to obtain a security clearance.

Submit your resume by visiting sei.cmu.edu/careers.

Have questions? Contact us at careers@sei.cmu.edu.

Carnegie Mellon University considers applicants for employment without regard to, and does not discriminate on the basis of, gender, race, protected veteran status, disability, or any other legally protected status.

About

For nearly 30 years, the CERT Division of the SEI at Carnegie Mellon University has been a leader in cybersecurity. Originally focused on incident response, we have expanded into cybersecurity areas such as network situational awareness, malicious code analysis, secure coding, resilience management, insider threats, digital investigations and intelligence, workforce development, DevOps, forensics, software assurance, vulnerability discovery and analysis, and risk management.

© 2016 Carnegie Mellon University | 4705 | 2.11.16

Contact Us

Software Engineering Institute
4500 Fifth Avenue, Pittsburgh, PA 15213-2612

Phone: 412.268.5800 | 888.201.4479
Web: www.sei.cmu.edu | www.cert.org
Email: info@sei.cmu.edu