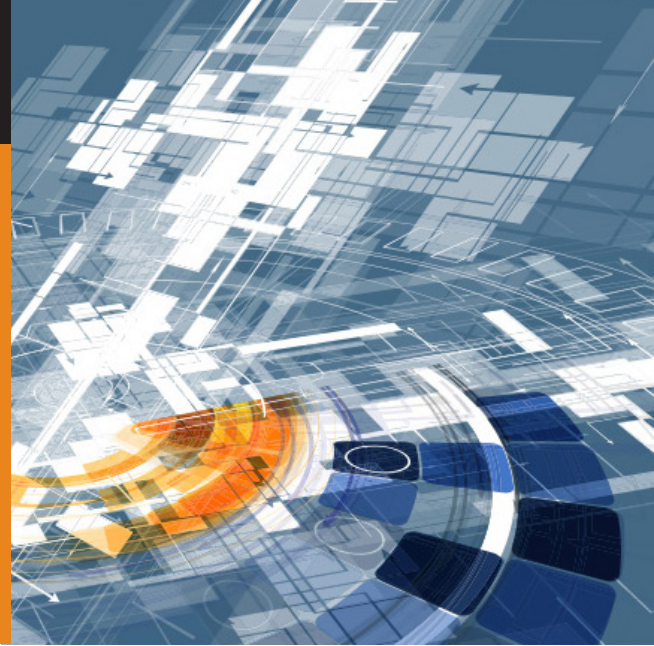




12th SEI Architecture-Centric Engineering Workshop for Educators



August 3–5, 2015 Pittsburgh, PA

The SEI hosts the annual Architecture-Centric Engineering Workshop for Educators to foster an ongoing exchange of ideas among educators whose curricula include the subjects of software architecture and software product lines. **The event is free of charge and open to any accredited, college-level educator.**

Facilitating this year's workshops are the SEI's Grace Lewis and Robert Nord. Lewis is deputy lead of the SEI's Advanced Mobile Systems Initiative and principal investigator for the Edge-Enabled Tactical Systems research team. Her interests include mobile computing, cloud computing, software architecture, and service-oriented architecture. Nord conducts research in the areas of software architecture, agile at scale, and technical debt. He is a co-author of the books *Applied Software Architecture* and *Documenting Software Architectures: Views and Beyond*.

Three Reasons to Attend

1. Attend two SEI courses at no charge.
2. Connect with a network of collaboration for research and education.
3. Gain new material to incorporate into your courses.

Schedule

August 3, 2015: 8:30 a.m. – 5:00 p.m.

Engineering Run-Time Malware Detection

This course covers the principles of designing and implementing a real-time malware detection system for an existing operating system, with concrete examples for Windows 7. It also teaches how to monitor a system for suspicious behaviors and analyze the results.

August 4, 2015: 8:30 a.m. – 5:00 p.m.

DevOps and Continuous Delivery: Software Architecture, Security, and Interactive Learning

This course is helpful if you wish to adopt DevOps practices and continuous-delivery workflows. The architecture component of the course focuses on the relationships among application software, the deployment environment, and the supporting tooling.

August 5, 2015: 8:30 a.m. – 3:30 p.m.

The third day is devoted to invited talks and a group session, facilitated by SEI team members, where participants share experiences, ideas, and tangible artifacts for introducing software architecture and product line topics into the college curriculum. Please bring a shareable artifact as an “entry fee.”

For more information about the Educators Workshop, visit <http://www.sei.cmu.edu/community/edworkshops/2015>

Note: The workshop is open to any accredited college-level educator. It is not open to the general public.

Contact Us

Software Engineering Institute
4500 Fifth Avenue, Pittsburgh, PA 15213-2612

Phone: 412.268.5800 | 888.201.4479
Web: www.sei.cmu.edu | www.cert.org
Email: info@sei.cmu.edu